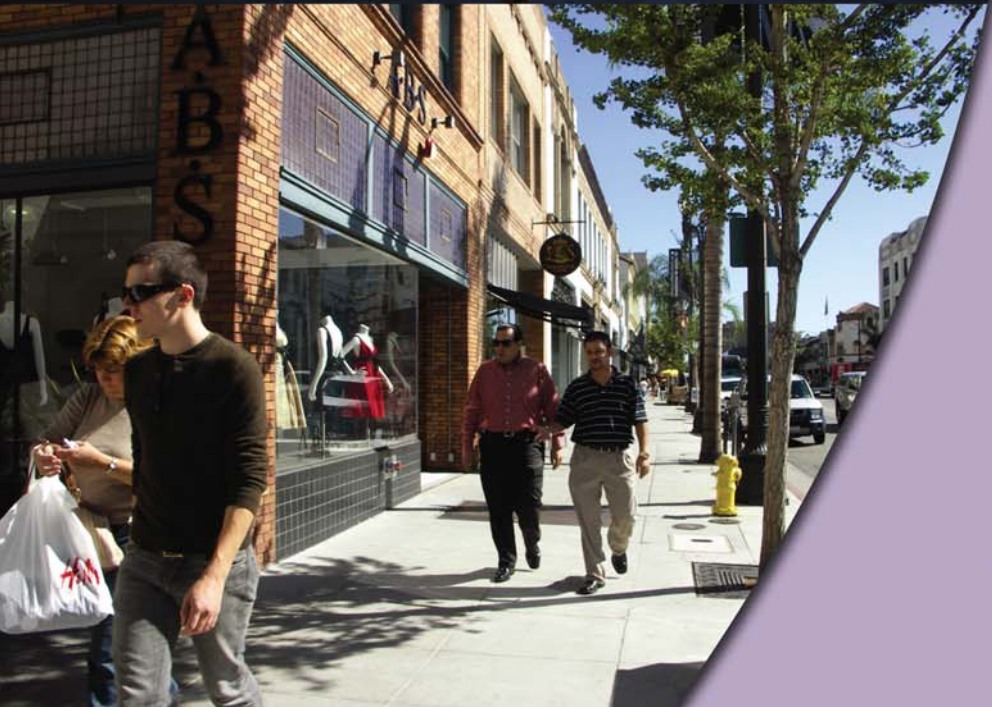




CITY OF PASADENA, CALIFORNIA

INVITES YOUR
INTEREST IN
THE POSITION OF

CITY MANAGER



THE COMMUNITY

The City of Pasadena, located about 20 minutes northeast of downtown Los Angeles, is a progressive and dynamic community. It is a cultural, scientific, corporate, entertainment, and education center for a region that approaches one million people. Pasadena was the childhood home of baseball great Jackie Robinson and his Olympic star brother Mack, and the birthplace of Julia Child.

The City's ethnic and economic diversity, combined with its heritage of historic architecture, provide a community character that is unique and exciting. People around the world know Pasadena!

The City offers a high quality of life based on elegant residential neighborhoods and many parks, a diverse economy employing over 100,000 persons, first class cultural institutions, several charmingly distinct retail centers, and colleges and universities of world renown. Its principal retail centers include Old Pasadena, the Playhouse District, South Lake Avenue, the Paseo Colorado, and East Pasadena. During the entire current decade, the local economy has outperformed regional and state economic trends.

Pasadena is one of few California cities with its own electric and water utility and health department.

The area features world class cultural and educational institutions, including the Tournament of Roses, the Rose Bowl, the Pacific Asia Museum, Art Center College of Design, Huntington Library Art Collections and Botanical Gardens, the Norton Simon Museum, the Pasadena Playhouse and Ambassador Auditorium, the California Institute of Technology, and Jet Propulsion Laboratory.

Recognized throughout the world, Pasadena's Rose Bowl is famous for championship events including five Super Bowl football games, the 1994 Olympic Games and the 1999 Women's World Cup Soccer Championship, in addition to each year's Rose Bowl Game. The Rose Bowl is also home to the UCLA Bruins football team.

The Huntington Library Art Collections and Botanical Gardens offer an extensive collection of literary classics, 17th and 18th century British and French art, and 150 acres of lush gardens.

The City's ethnic and economic diversity, combined with its heritage of historic architecture, provide a community character that is unique and exciting.

The Norton Simon Museum offers seven centuries of European art from the Renaissance to the 20th century, including masterpieces by Van Gogh, Degas, Rembrandt, and Picasso. The Pacific Asia Museum is dedicated to the promotion and understanding of the arts and culture of Asia and the Pacific, while the Pasadena Museum of California Art features California art, architecture and design from 1850 to the present. The Gamble House, built in 1908, is an architectural masterpiece of the American Arts and Crafts era.

Pasadena is home to more than 500 restaurants, including some of southern California's finest. Exciting nightlife ranges from jazz clubs and comedy to live theatre and symphony performances.

With its convenient location and a population of 145,000, Pasadena offers visitors a traditional and friendly enclave. The City's mild climate also makes for ideal sightseeing conditions. The year-round temperature averages in the low 70's.

Pasadena offers easy access to all area airports, freeways and southern California attractions, including Universal Studios, Disneyland, Dodger Stadium, the Staples Center, and beaches. To make sightseeing even easier, visitors can hop aboard the Gold Line light rail system. Part of the Los Angeles County Metro transit network, the 13.7-mile Gold Line with six stations in Pasadena transports passengers from Pasadena to downtown Los Angeles and points in between.

ISSUES, CHALLENGES AND OPPORTUNITIES

With all of the City's progress during the current decade, the Council currently



sees a need to look 10 or 15 years into the future. The challenge for the new City Manager will be to participate in this next phase of the City's history, actively assisting the Council and the community, as they work to create a greater City.

The Council's vision for the future of the City is to retain its ethnic and economic diversity; to celebrate its active life of arts and culture; and to achieve equitable participation of all residents in the life of the City.

Pasadena faces many issues in its effort to maintain and strengthen the quality of life. They include fiscal management in uncertain economic times; promotion of a strong local economy; preservation and production of affordable housing; in collaboration with the Pasadena Unified School District, strengthening of the public schools and other programs supporting positive youth development; extension of transit systems and traffic management; and the pursuit of a City that is "pedestrian friendly".

In 2006, the City joined the U.S. Conference of Mayors' Climate Control Agreement and the United Nations Global Environmental Accords. Pasadena seeks to be a leader in pursuing environmental responsibility, "green building" standards and sustainability. Progress in this effort is an important priority.

During the last 10 years, the City has invested \$500 million in infrastructure, including the seismic retrofit of City Hall. The Council's commitment is ongoing with a major expansion of the conference center approaching completion and improvements being planned for the Rose Bowl. These efforts represent still another priority.

Planning and development issues are critical to the residents of Pasadena. The City's planning goals during the next 24 months include open space, housing, mobility and land use, as well as continued extension of local and regional transit facilities. As the City undertakes to update its General Plan, challenges include encouraging and directing development to continue to support a balanced, vibrant economy while mitigating development impacts, protecting historic neighborhoods and preserving a high quality of life.

The City faces these challenges in an environment that places a high value on community engagement and open government.



The new City Manager will be expected to assist the Council in meeting these expectations.

THE IDEAL CITY MANAGER CANDIDATE

The City Council seeks a strong administrator who possesses the ability to anticipate issues and work collaboratively to develop solutions. The new City Manager should embrace a big picture perspective while maintaining a good grasp of the details. The person selected must be energetic, focused and flexible.

The ideal candidate will be an accomplished manager with the ability to provide clear direction to staff. While exercising skilled leadership and judgment, the selected individual will delegate authority and encourage staff to develop their full potential. He/she should be an excellent team and consensus builder.

The new City Manager should possess strong communication skills. Most importantly, these skills should be based on a strong commitment to effective, "no surprises" communication with the City Council. The selected candidate will work with the Council on City priorities, acting in an advisory capacity while the Council performs its policy-making responsibilities. In addition, he/she must focus on the long-term fiscal health of the City and propose innovative solutions to City issues.

The new City Manager should embrace a big picture perspective while maintaining a good grasp of the details.

Individuals who are talented at building partnerships with neighborhood associations and the business sector and enjoy interacting with all members of the community will be highly valued. The City Manager should be approachable and visible in the community. He/she should promote citizen involvement and an honest, well-grounded dialogue with the citizens of Pasadena.

Candidates should possess a broad range of experience in local government with strong skills on finance and budget. A Bachelor's degree in Public Administration, Business Administration or a related field is required. A Master's degree is highly desired.

COMPENSATION AND TERMS OF EMPLOYMENT

The salary for the City Manager is open and is dependent upon qualifications. The City operates on a "9/80 schedule", closing on alternate Fridays, and it offers an attractive benefits package, including:

PERS Retirement – 2.5% at 55. The City pays 4.4% of the employee's contribution.

Annual Leave – 12 holidays, 120 hours vacation, 80 hours sick leave, and up to 80 hours paid management leave.

Life Insurance – City-paid benefit of \$200,000. (Additional and/or dependent coverage available at employee's expense.)

Health Insurance – City contributes \$886 per month for medical premiums, vision and/or deferred comp. PERS medical plans are offered.

Dental Insurance – City contributes 100% of employee premium and up to \$40 per month for dependent premiums.

Personal Development Allowance – \$1,000 annually for professional or personal development.

Car Allowance – \$550 per month.

Medical Exam – City pays annually for a comprehensive medical exam for executives.



Victor Muschetto photography picture on front cover of City Hall other photos provided by Zack Stromberg

APPLICATIONS

To apply for this opportunity, please visit our website at www.bobmurrayassoc.com. You will be prompted to create an online profile. If you have any questions, please contact our offices at (916) 784-9080. A detailed brochure is available.

**Filing Deadline:
May 16, 2008**

Following the closing date, resumes will be screened according to the qualifications outlined above. The most qualified candidates will be invited to personal interviews with Bob Murray & Associates. A select group of candidates will be asked to provide references once it is anticipated that they may be recommended as finalists. References will be contacted only following candidate approval. Finalist interviews will be held in Pasadena. All candidates will be advised following selection of the City Manager. If you have any questions, please do not hesitate to call Mr. Bob Murray at:

(916) 784-9080.

